



SkySpecs and PLP bring power line and blade inspection expertise together

Less downtime – better data

SkySpecs and PLP Services have teamed up to provide a holistic inspection service tailored for the wind industry. Ensure the safety, reliability, and longevity of your generating assets and the transmission lines that connect them to the grid with coordinated visual, IR, and/or LiDAR inspections.



70+ years of industry experience and deep knowledge of power line condition monitoring and analysis with extensive testing expertise

[View the PLP
Inspection Solution](#)



300k+ blade inspections conducted in over **30 countries** with in-house expertise to analyze data

[View the SkySpecs
Inspection Solution](#)

A package designed to fit your schedule and your data needs:

PROJECT PLANNING

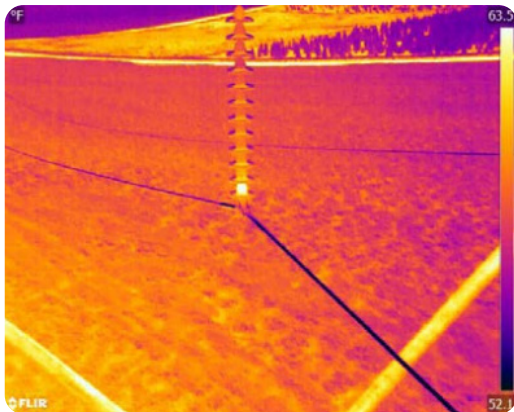
- Detailed statement of work
- Pre-inspection plan, scheduling, and safety assessment
- GIS site analysis

ROBOTIC DATA COLLECTION

- Comprehensive inspections of your blades and transmission lines conducted by autonomous drones (blades) and insured, skilled drone pilots (transmission lines)
- Immediate notifications of high-risk anomaly detection
- Seamless, professional, and expert inspections

POST-INSPECTION DELIVERABLES

- Comprehensive analysis of transmission lines
- Results delivered in SkySpecs' asset management platform, Horizon
- Identification and classification of damages and reliability concerns powered by AI and industry-leading expert analysis
- Results available in easy to interpret and share reports.



IR anomaly on insulator - SkySpecs' Horizon



Ground wire disconnected from the overhead shield wire - SkySpecs' Horizon

[REQUEST A QUOTE](#)

We will be in touch within 24 hours to learn more about your project, and to provide you with a scope of work and a quote!

SkySpecs provides technological and robotic solutions for the wind energy industry and serves owners, OEMs, and ISPs in 30 countries. Horizon, the asset management platform for wind energy stakeholders, streamlines and centralizes asset data, enabling more effective, data-driven decision making and increasing the efficiency and long-term profitability of your wind farm.

PLP protects the world's most critical connections by creating stronger and more reliable networks. The company's precision-engineered solutions are trusted by energy and communications providers worldwide to perform better and last longer. With locations in over 20 countries, PLP works as a united global corporation, delivering high-quality products and unparalleled service to customers in over 140 countries.